

2015

# School and Housing Demographics in the Twin Cities (2015)

Myron Orfield

*University of Minnesota Law School*

Follow this and additional works at: [http://scholarship.law.umn.edu/imo\\_presentations](http://scholarship.law.umn.edu/imo_presentations)



Part of the [Law Commons](#)

---

## Recommended Citation

MYRON ORFIELD, SCHOOL AND HOUSING DEMOGRAPHICS IN THE TWIN CITIES (2015) (2015).

This Article is brought to you for free and open access by the University of Minnesota Law School. It has been accepted for inclusion in Presentations collection by an authorized administrator of the Scholarship Repository. For more information, please contact [lenzx009@umn.edu](mailto:lenzx009@umn.edu).



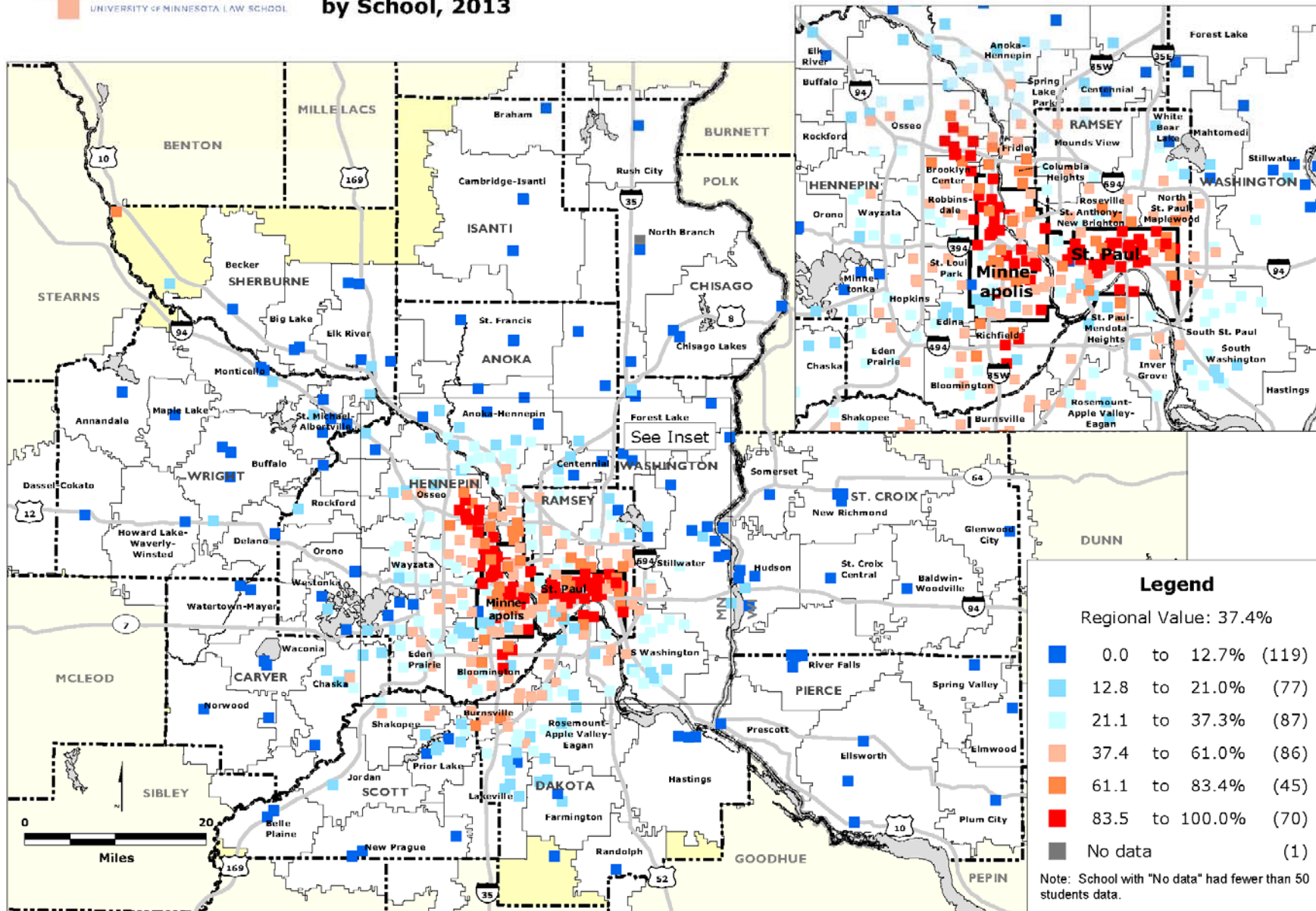
# Education and Demographics Presentation

-Myron Orfield-



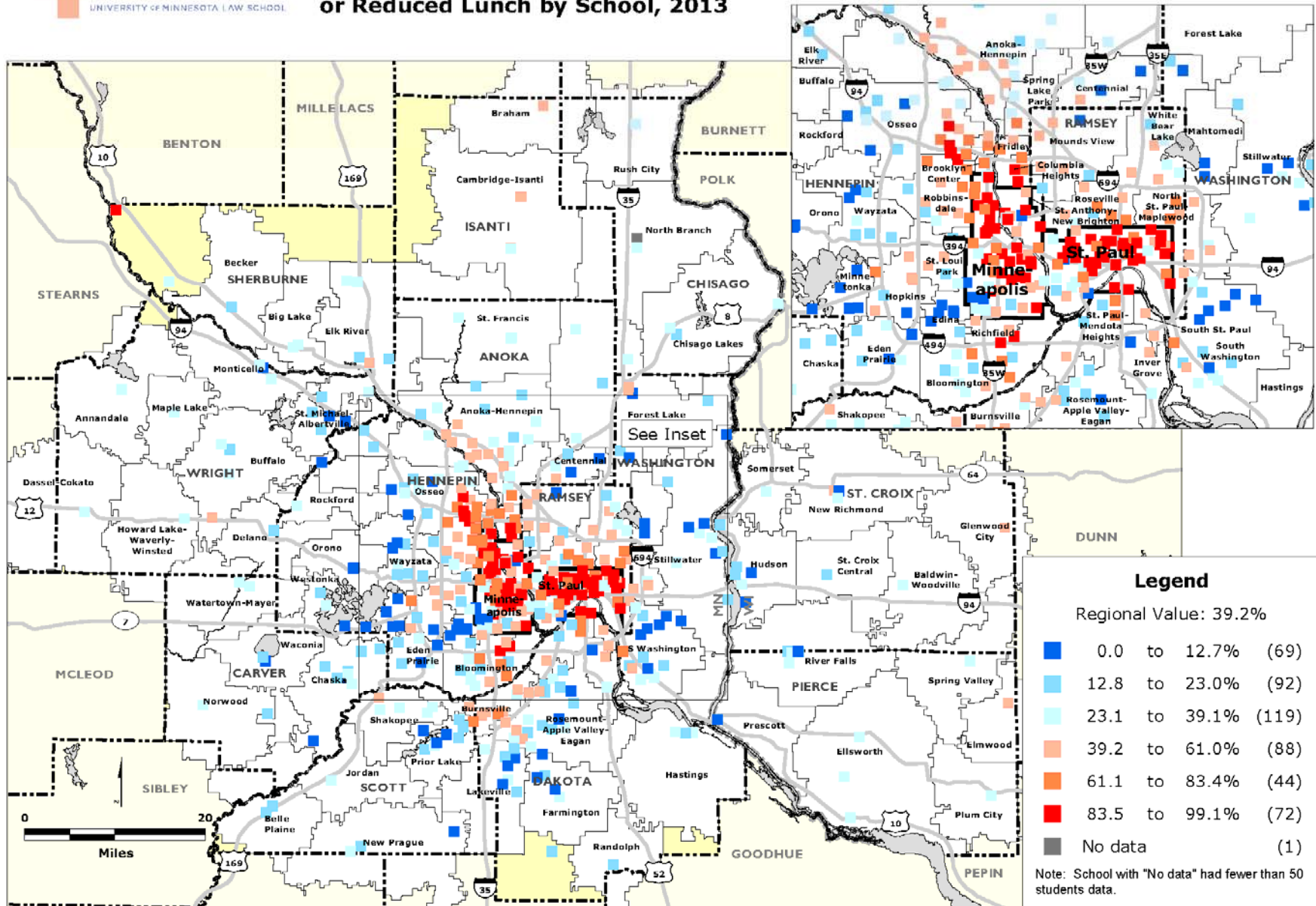
# Twin Cities School Demographics

## MINNEAPOLIS-SAINT PAUL REGION: Percentage Minority Elementary Students by School, 2013



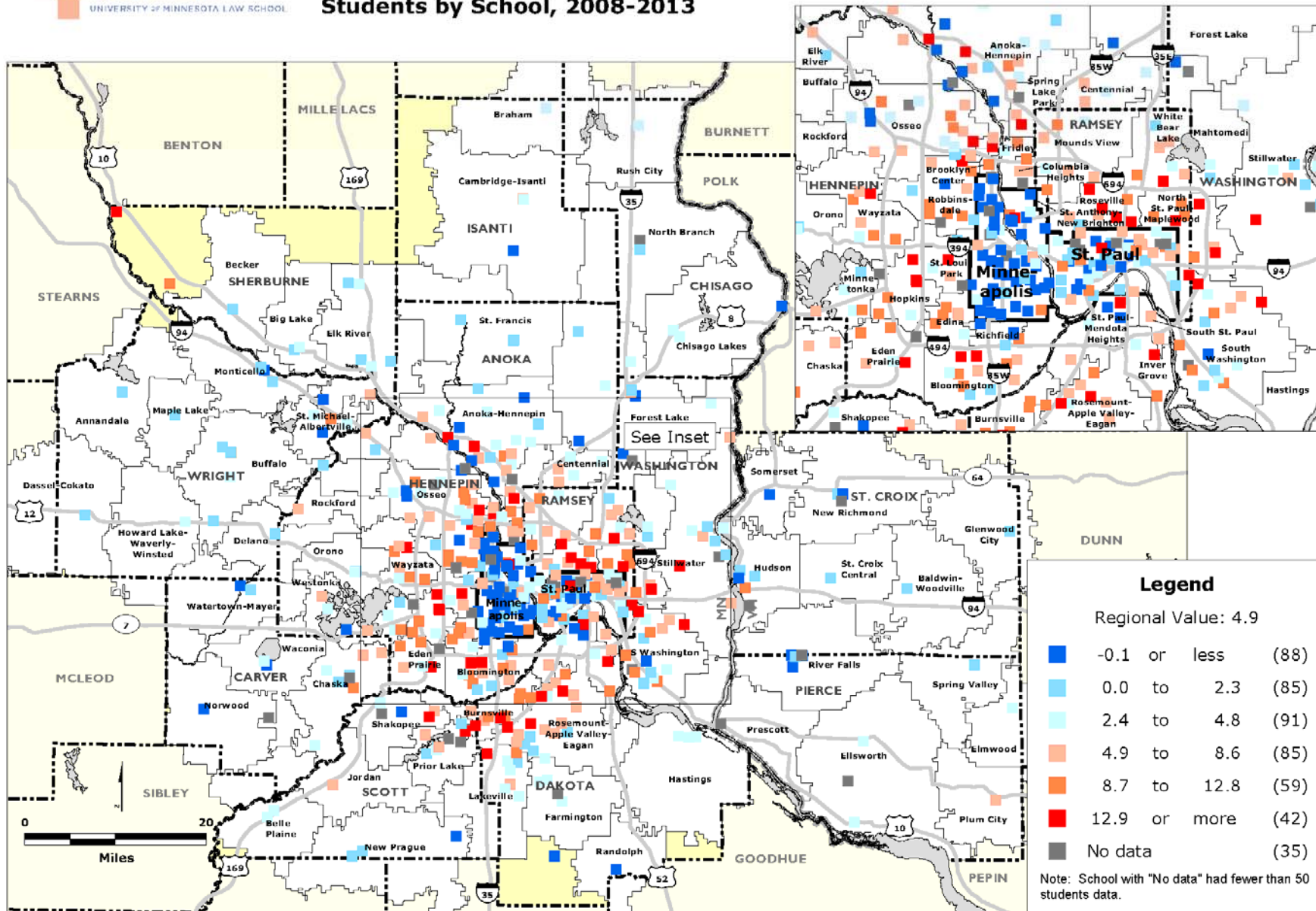
Data Source: National Center for Education Statistics.

## MINNEAPOLIS-SAINT PAUL REGION: Percentage of Elementary Students Eligible for Free or Reduced Lunch by School, 2013



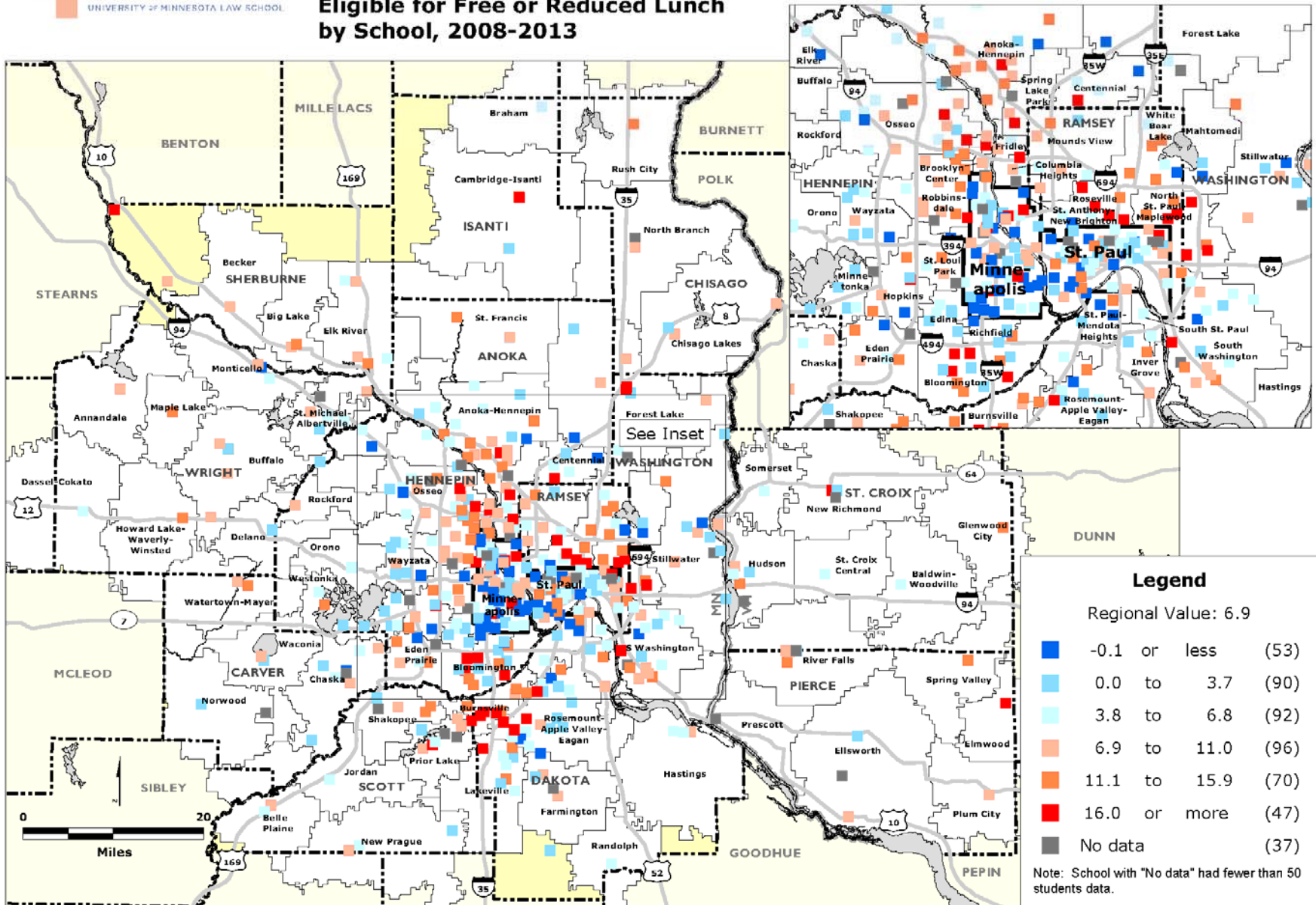
Data Source: National Center for Education Statistics.

## MINNEAPOLIS-SAINT PAUL REGION: Percentage Point Change in the Share of Minority Elementary Students by School, 2008-2013



Data Source: National Center for Education Statistics.

## MINNEAPOLIS-SAINT PAUL REGION: Percentage Point Change in the Share of Elementary Students Eligible for Free or Reduced Lunch by School, 2008-2013



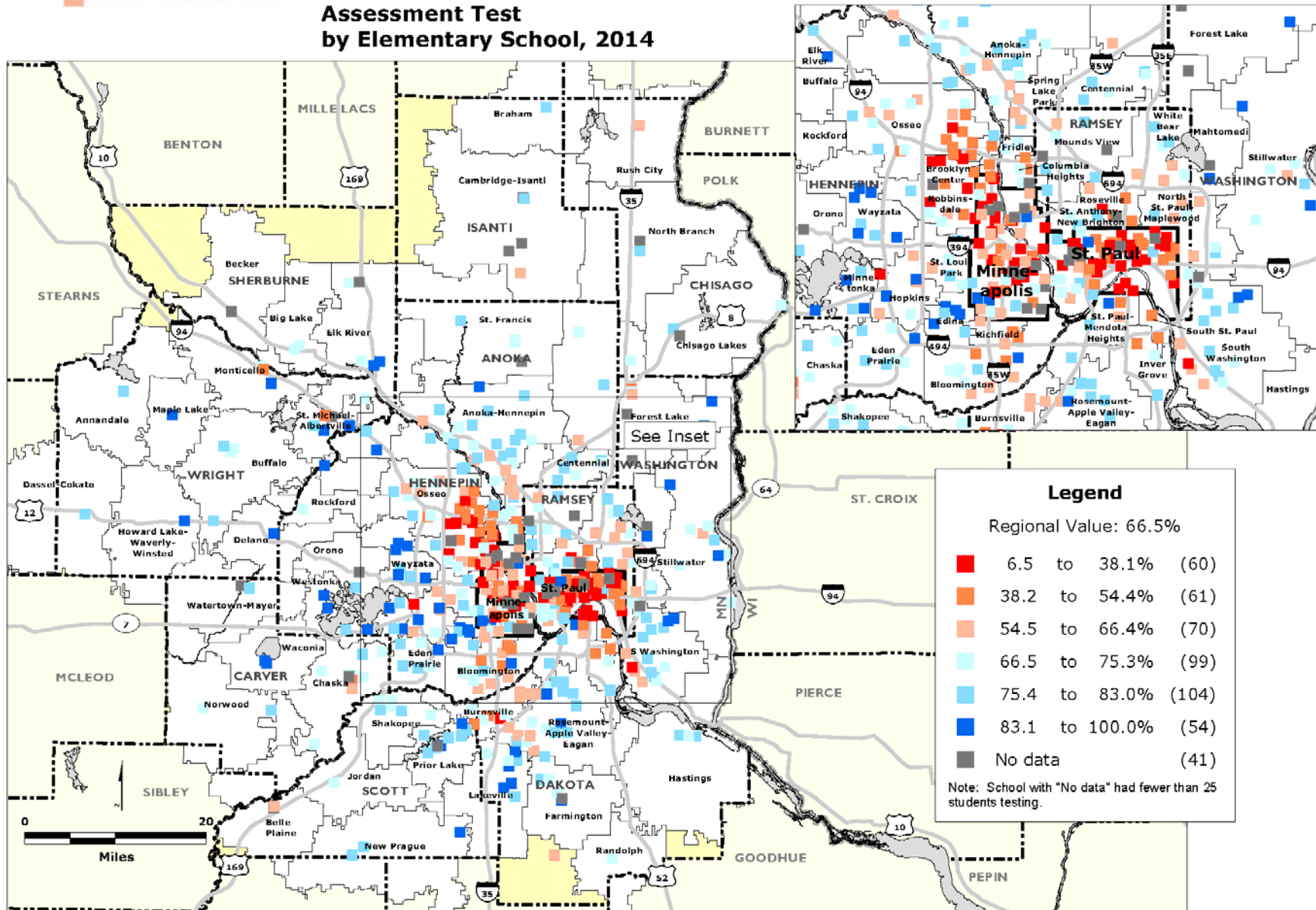
Data Source: National Center for Education Statistics.



# MCA Test Results

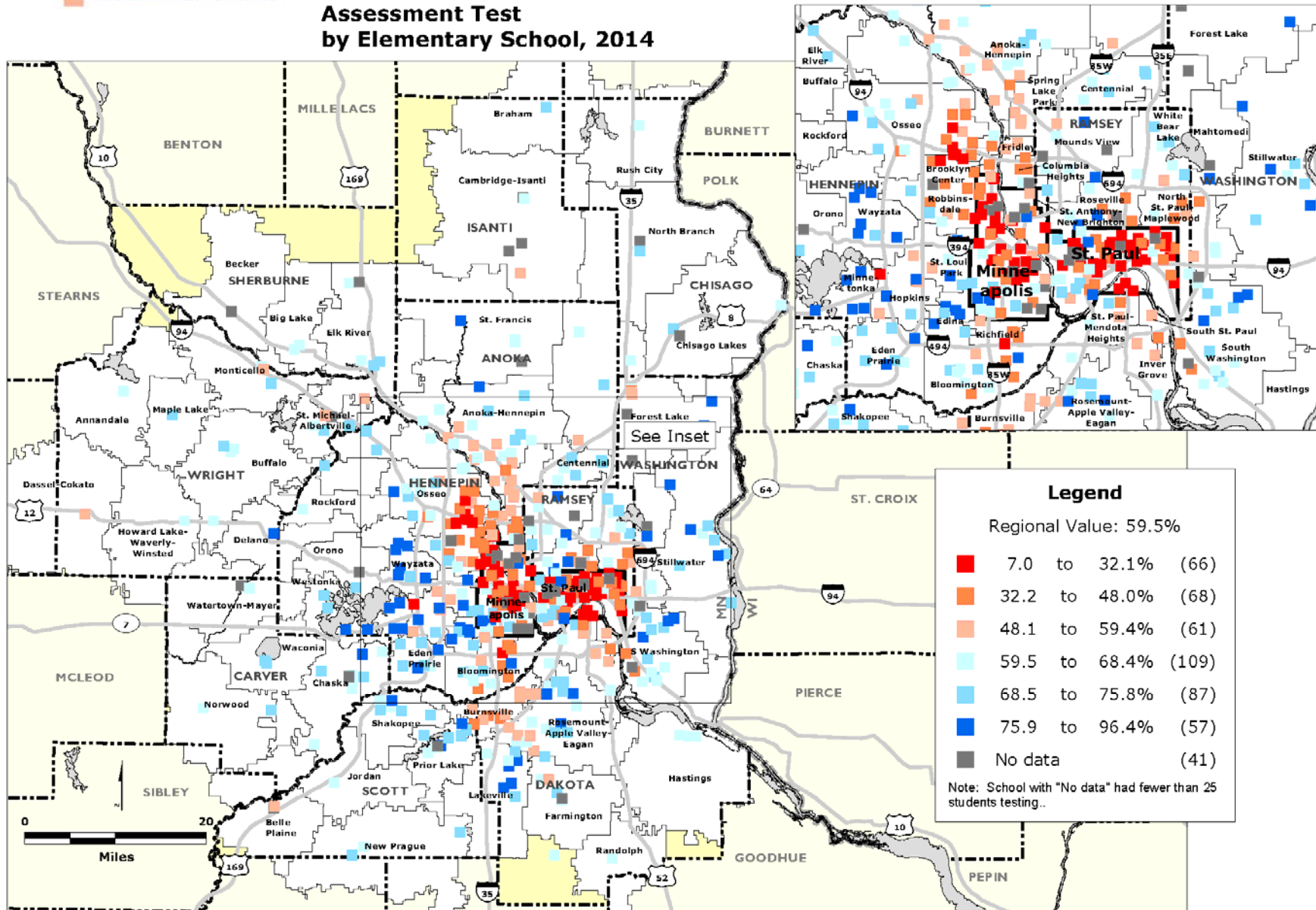


## MINNEAPOLIS-SAINT PAUL REGION: Percentage of Students with Proficient Scores in the Math Portion of the MCA III Assessment Test by Elementary School, 2014



Data Source: Minnesota Department of Education.

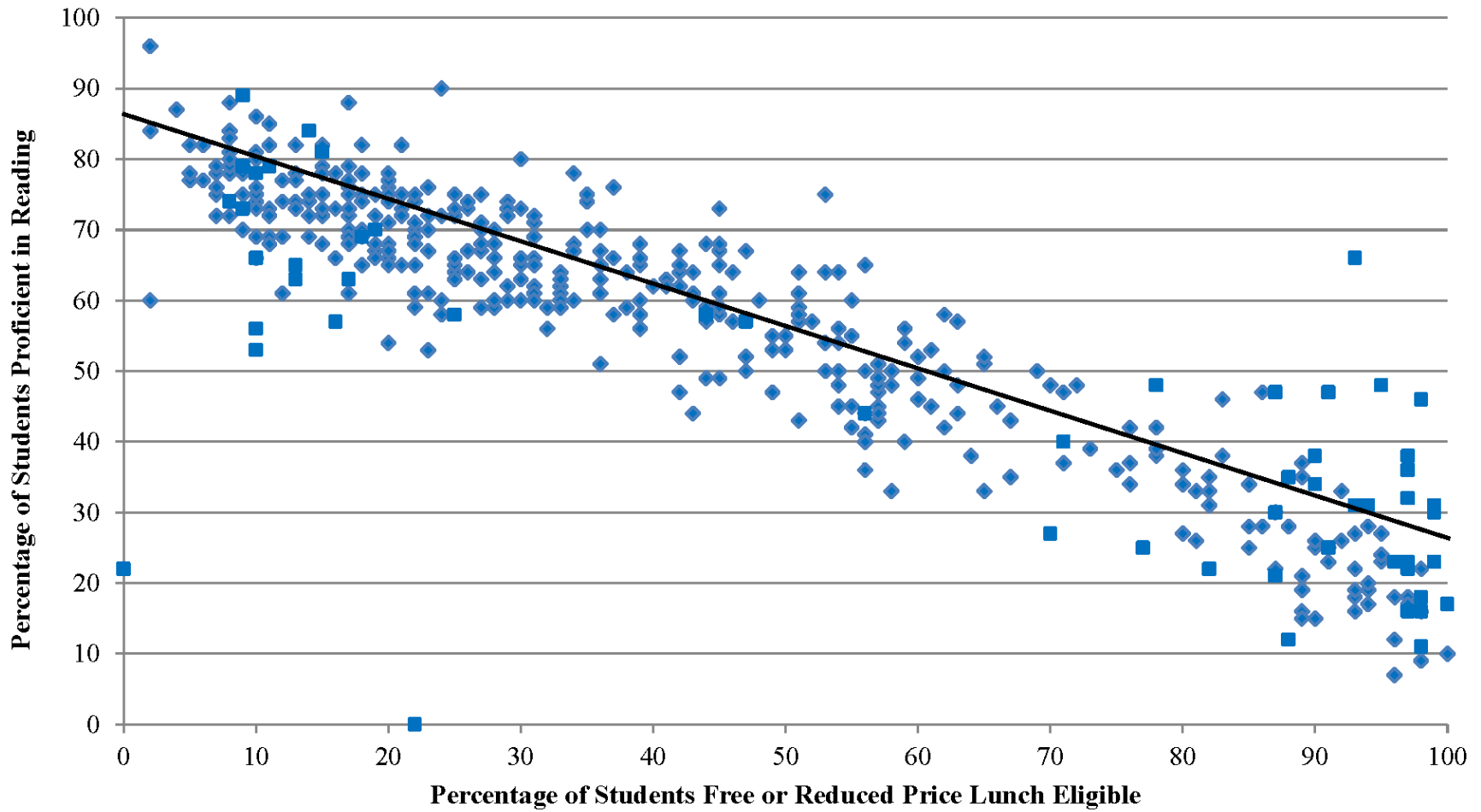
## MINNEAPOLIS-SAINT PAUL REGION: Percentage of Students with Proficient Scores in the Reading Portion of the MCA III Assessment Test by Elementary School, 2014



Data Source: Minnesota Department of Education.

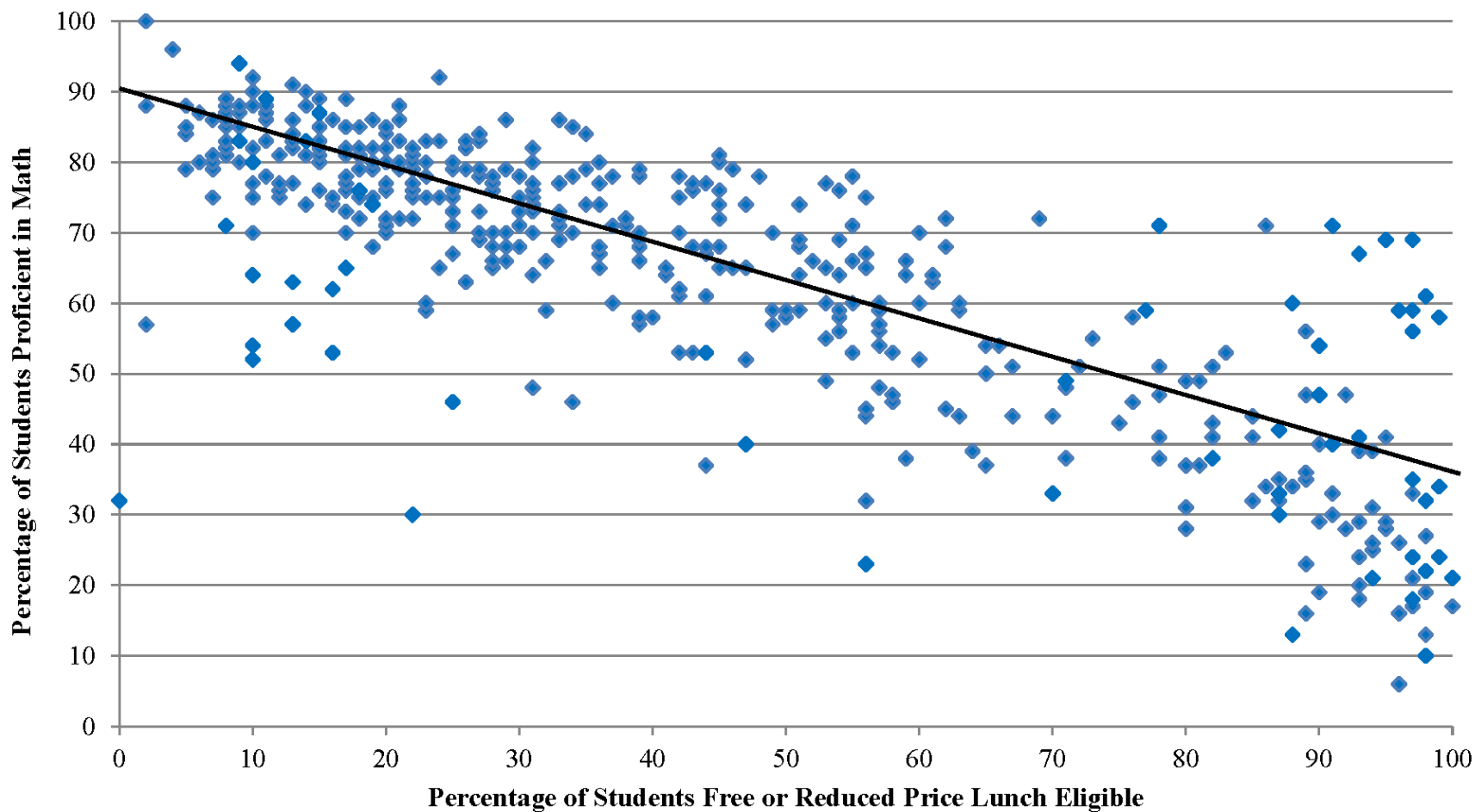
## Poverty and Reading Proficiency Rates in Twin Cities Elementary Schools, 2013-14

(correlation =  $-.85$ )



# Poverty and Math Proficiency Rates in Twin Cities Elementary Schools, 2013-14

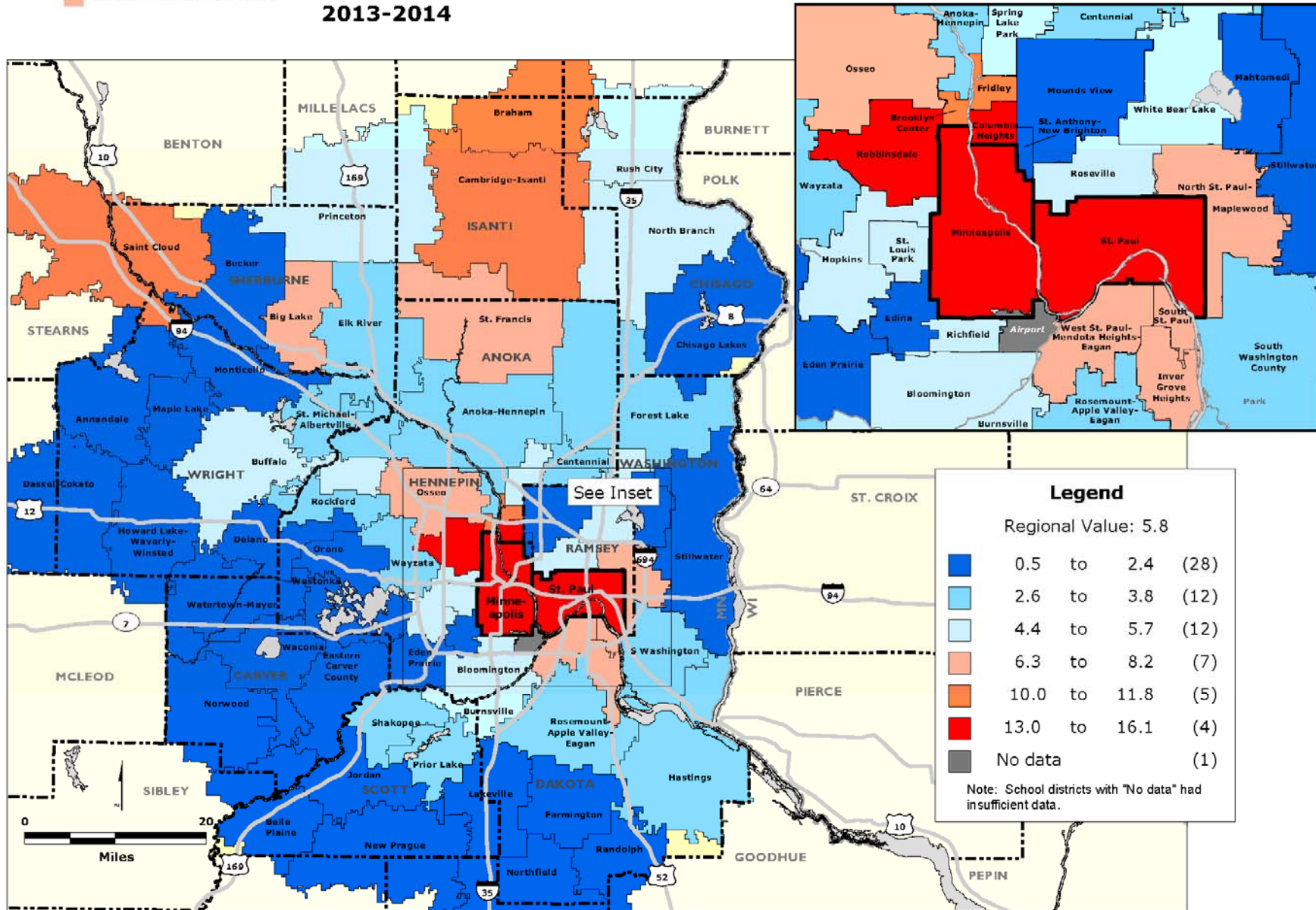
(correlation =  $-.82$ )





# Disciplinary Incidents

## MINNEAPOLIS-SAINT PAUL REGION: Disciplinary Incidents per 100 Students by School Districts, 2013-2014

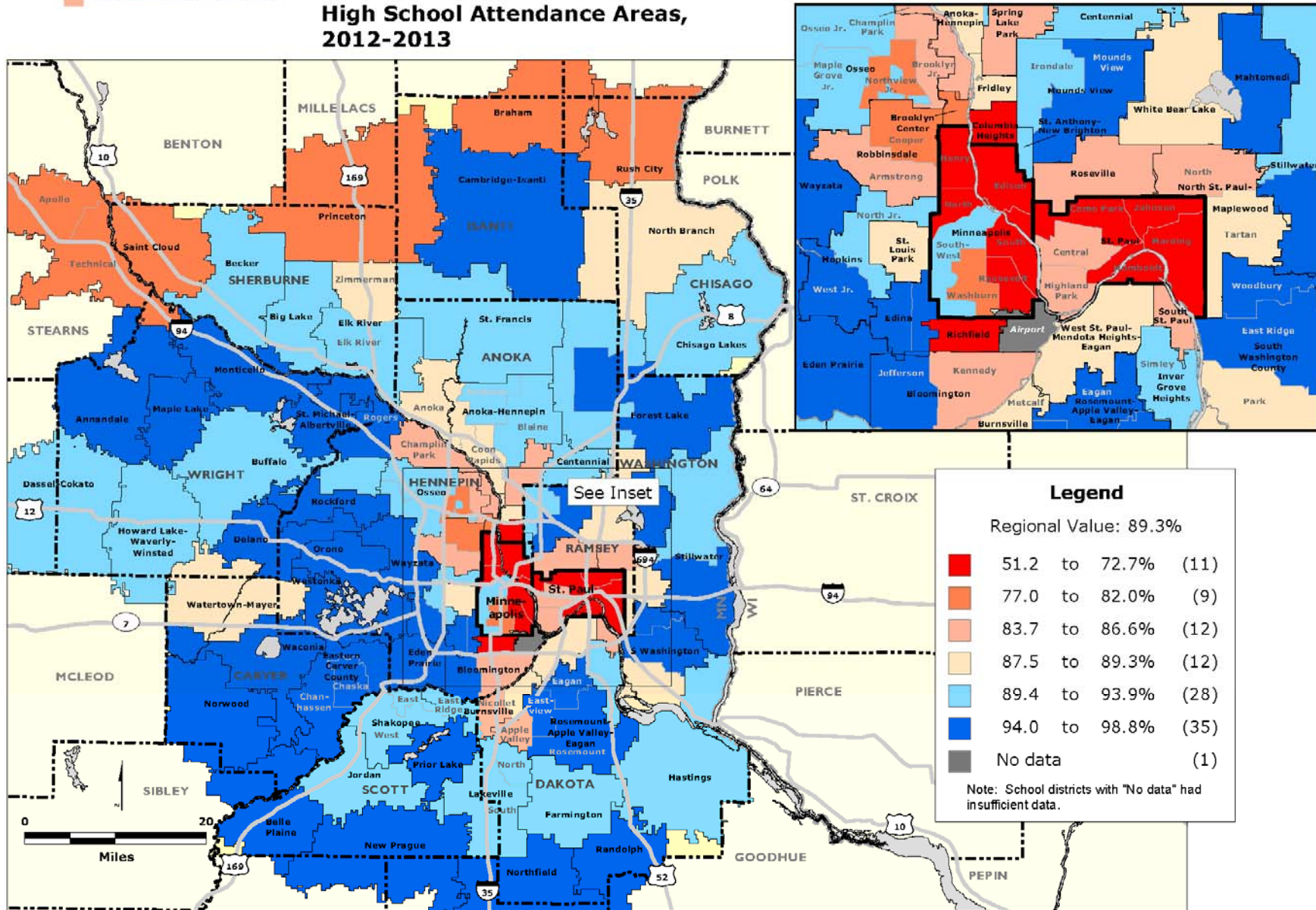


Data Source: Minnesota Department of Education.



GRAD  
Graduation-Required  
Assessments for  
Diploma Test

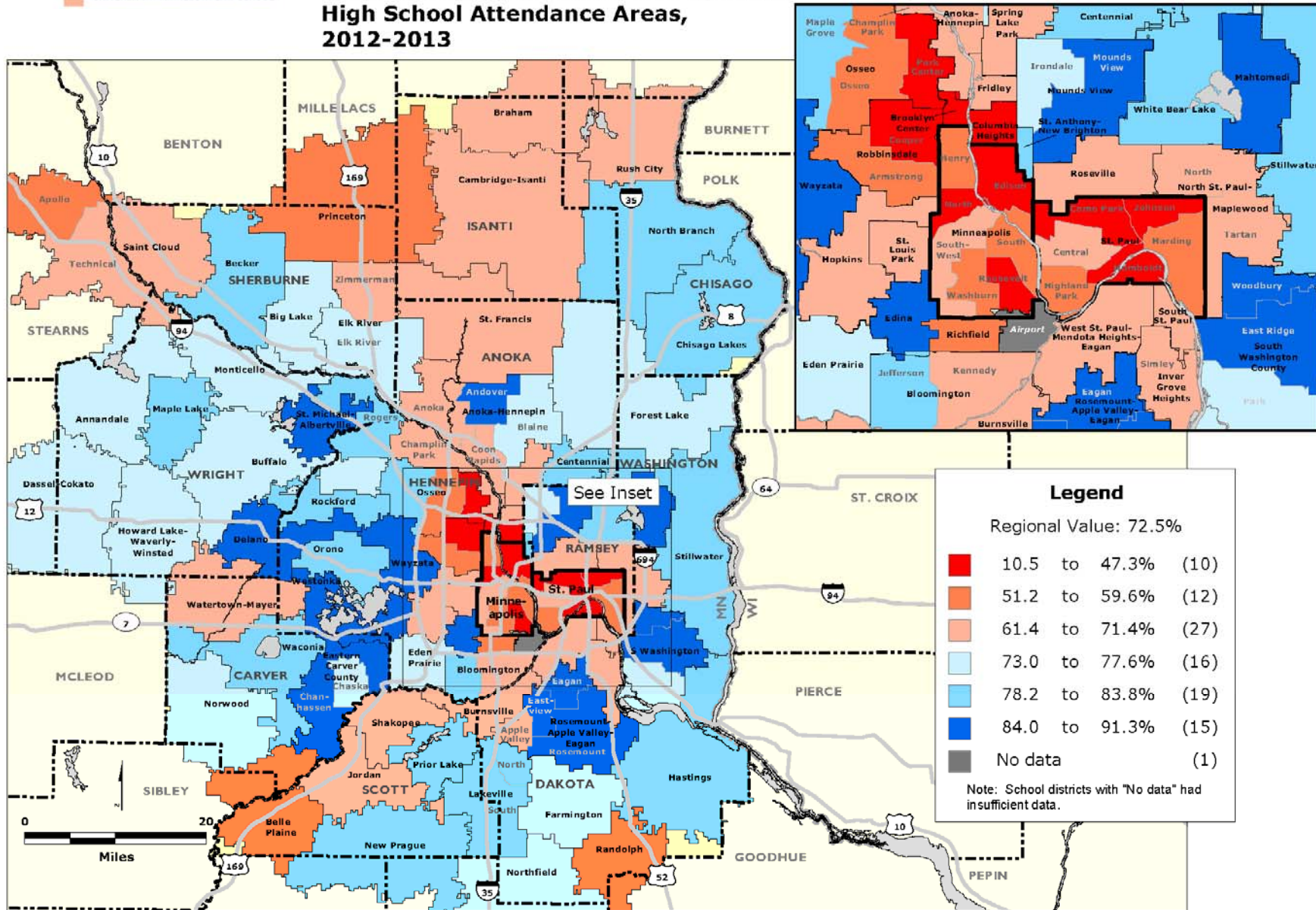
## MINNEAPOLIS-SAINT PAUL REGION: Percentage of 9th Graders Passing the Writing Portion of the GRAD test by Public High School Attendance Areas, 2012-2013



Data Source: Minnesota Department of Education.



## MINNEAPOLIS-SAINT PAUL REGION: Percentage of 11th Graders Passing the Math Portion of the GRAD test by Public High School Attendance Areas, 2012-2013



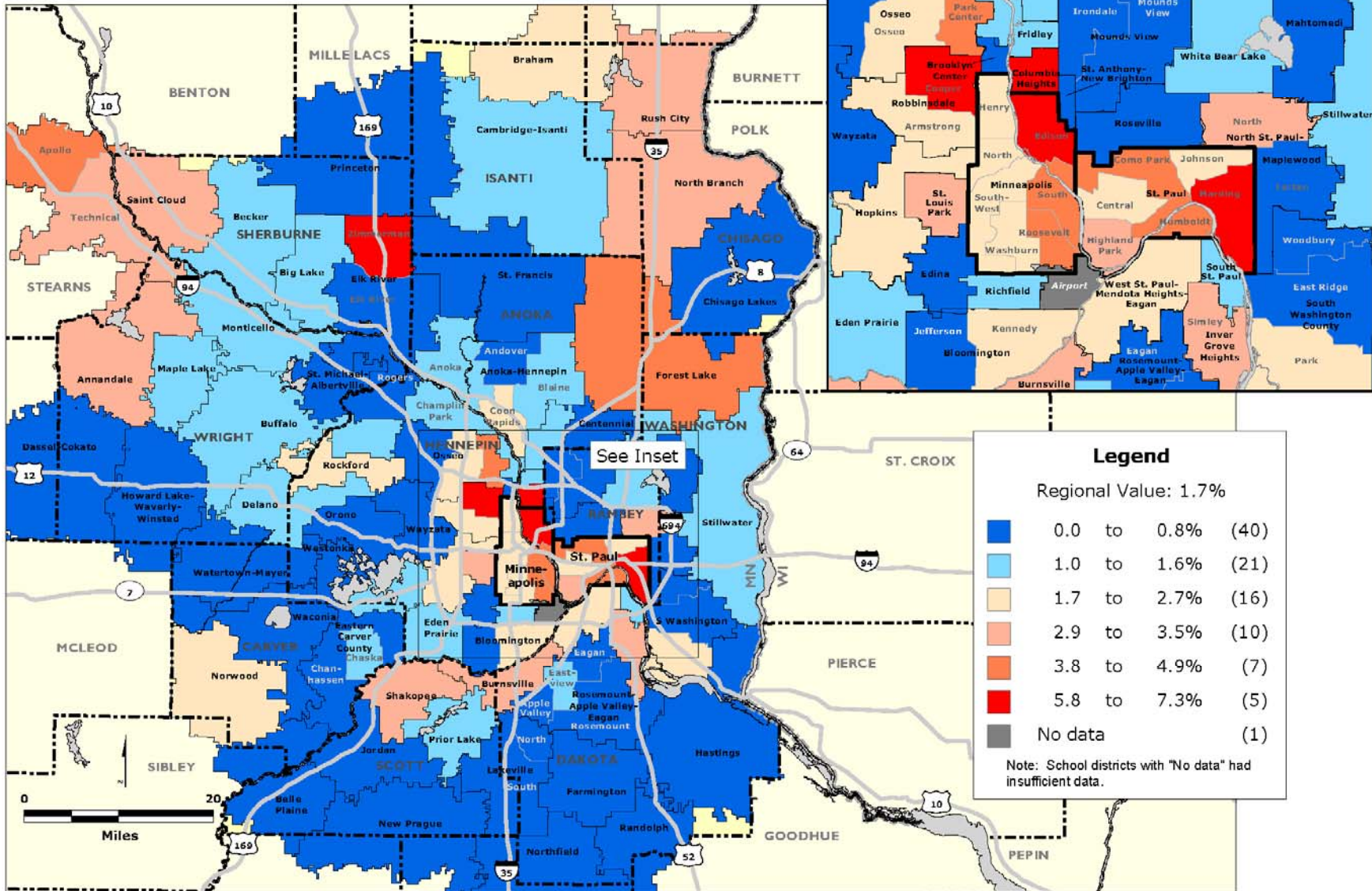
Data Source: Minnesota Department of Education.



# Dropout and Graduation Rates

## MINNEAPOLIS-SAINT PAUL REGION: Four Year Dropout Rate by High School Attendance Boundary, 2013-2014

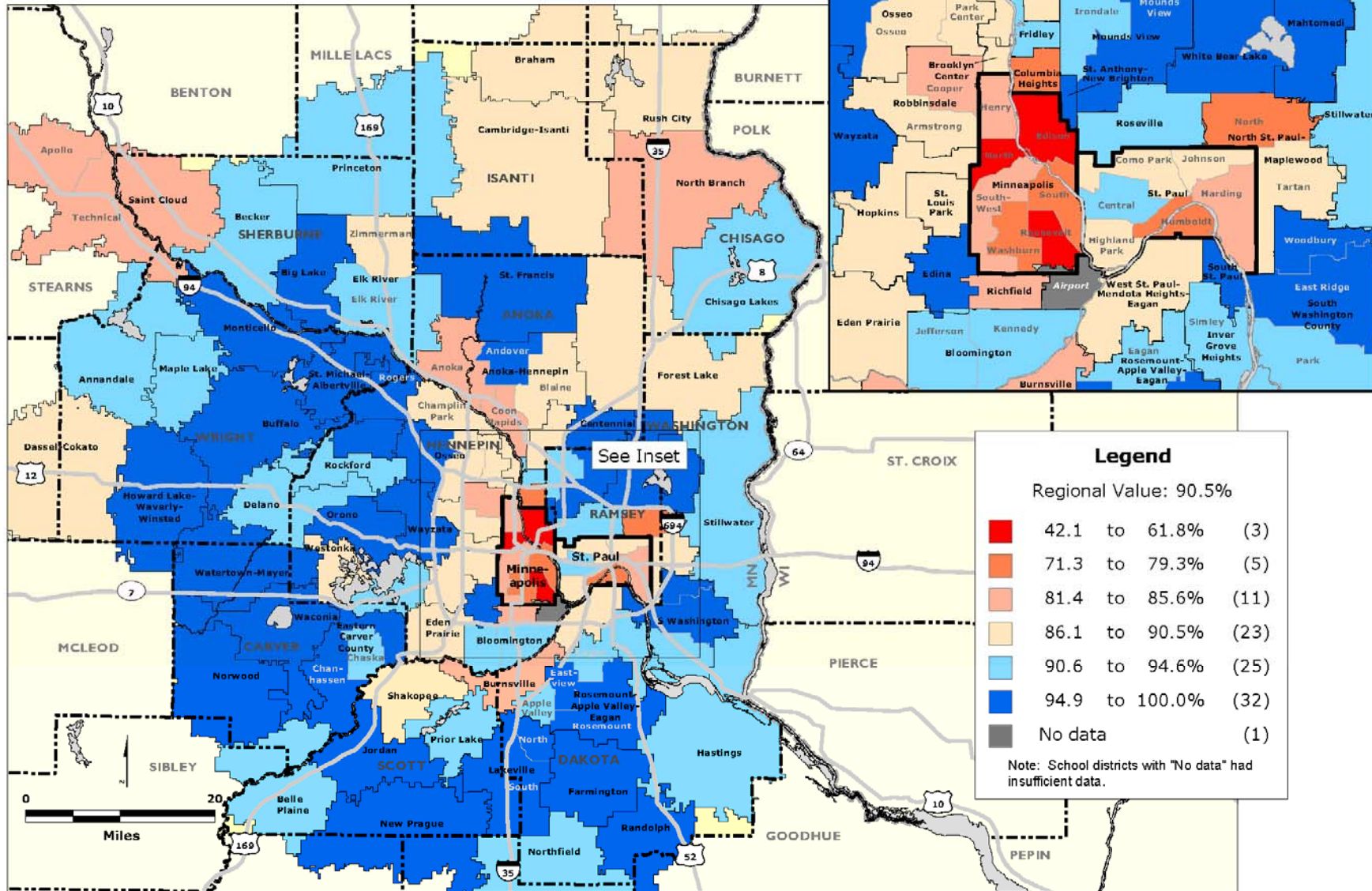
Note: The Four-Year Dropout Rate is based on a four-year cohort of first time ninth grade students plus transfers into the cohort within the four year period minus transfers out of the cohort within the four year period.



Data Source: Minnesota Department of Education.

## MINNEAPOLIS-SAINT PAUL REGION: Four Year Graduation Rate by High School Attendance Boundary, 2013-2014

Note: The Four-Year Graduation Rate is a four-year, on-time graduation rate based on a cohort of first time ninth grade students plus transfers into the cohort within the four year period minus transfers out of the cohort within the four year period.



Data Source: Minnesota Department of Education.

